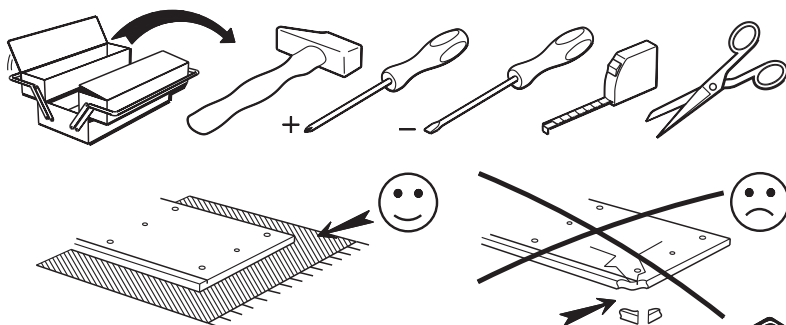
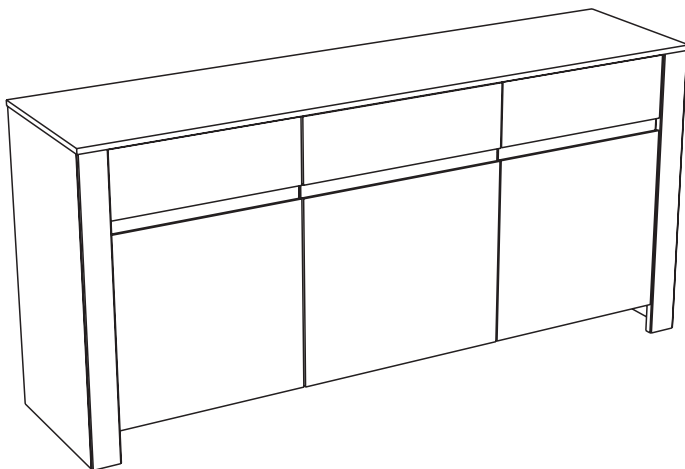
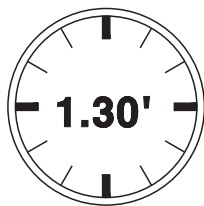


# 0316ENFI



GREEN  
way

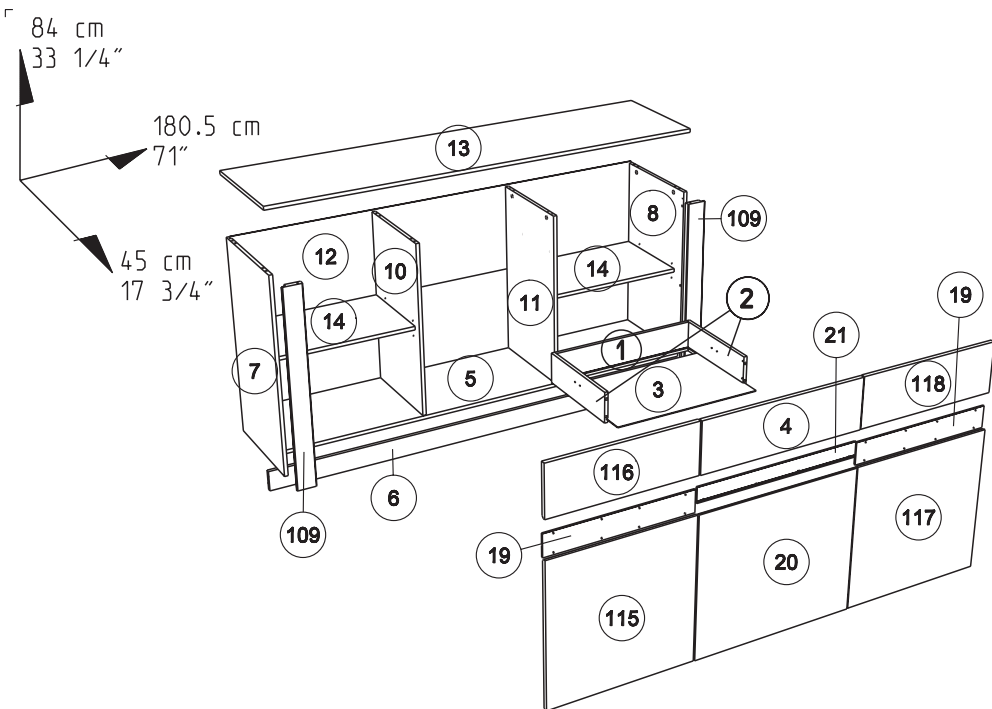


Gamme : TIAGO

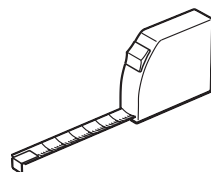


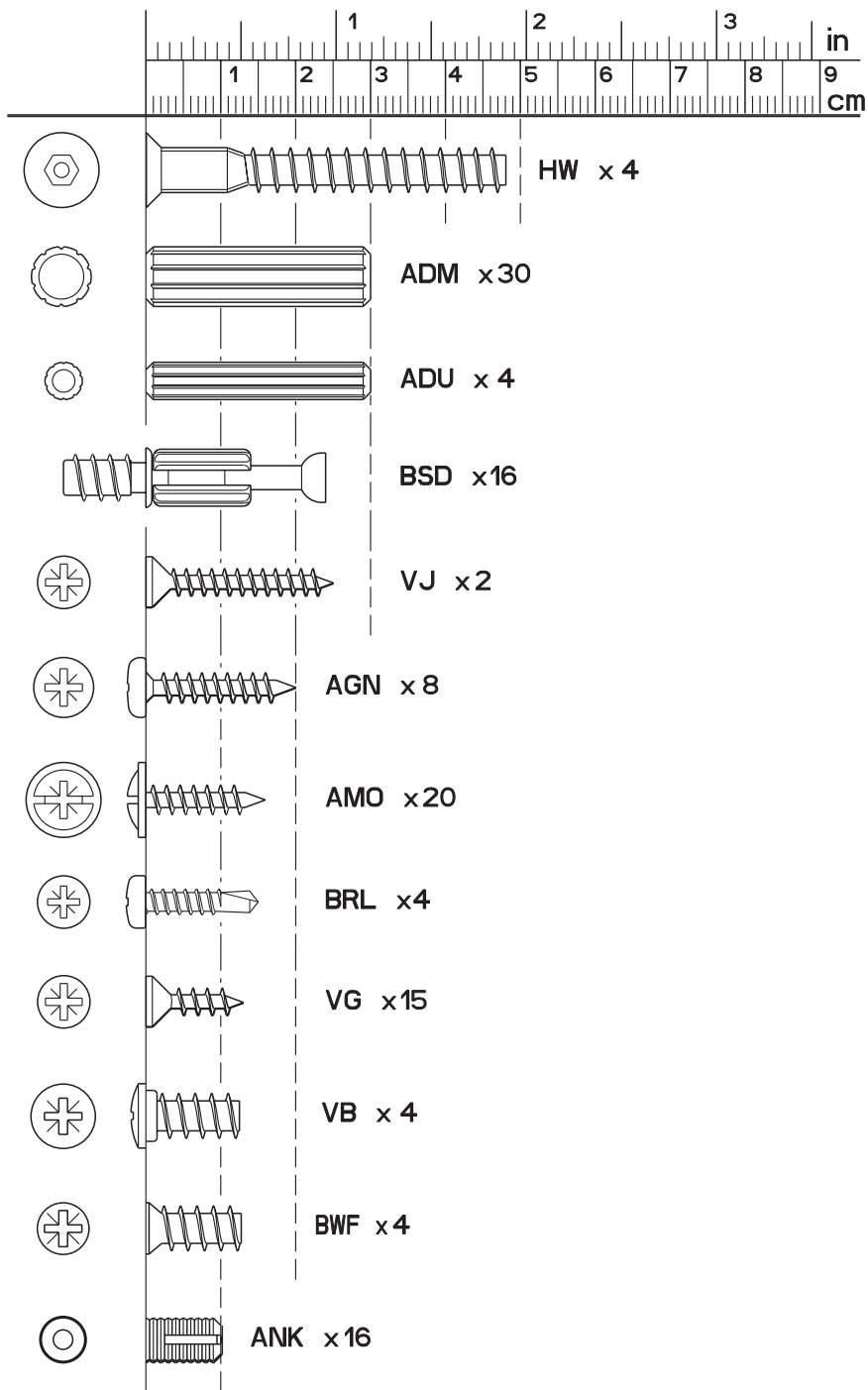
Parisot

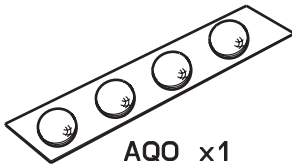
www.parisot.com



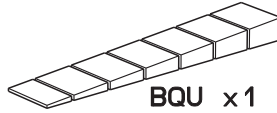
		mm			inch		
19	x 2	519	80	6	20 7/16	3 1/8	1/4
118	x 1	520	180	15	20 1/2	7 1/16	9/16
116	x 1	520	180	15	20 1/2	7 1/16	9/16
117	x 1	520	518	15	20 1/2	20 3/8	9/16
115	x 1	520	518	15	20 1/2	20 3/8	9/16
14	x 2	579	364	15	22 13/16	14 5/16	9/16
21	x 1	590	55	6	23 1/4	2 3/16	1/4
20	x 1	590	518	15	23 1/4	20 3/8	9/16
4	x 1	591	180	15	23 1/4	7 1/16	9/16
11	x 1	723	402	15	28 7/16	15 13/16	9/16
10	x 1	723	402	15	28 7/16	15 13/16	9/16
109	x 2	824	80	22	32 7/16	3 1/8	7/8
8	x 1	824	442	15	32 7/16	17 3/8	9/16
7	x 1	824	442	15	32 7/16	17 3/8	9/16
6	x 1	1767	86	15	69 9/16	3 3/8	9/16
5	x 1	1767	426	15	69 9/16	16 3/4	9/16
13	x 1	1802	450	15	70 15/16	17 11/16	9/16
2	x 2	350	110	13	13 3/4	4 5/16	1/2
1	x 1	528	110	13	20 13/16	4 5/16	1/2
3	x 1	538	349	3	21 3/16	13 3/4	1/8
12	x 1	1783	739	3	70 3/16	29 1/8	1/8



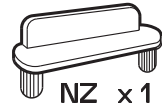




**AQQ x1**



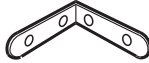
**BQU x1**



**NZ x1**



**BLL x3**



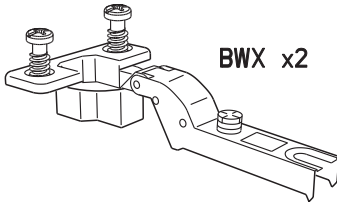
**LN x3**



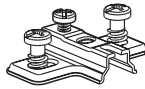
**HV x1**



**Ai x16**



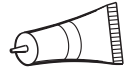
**BWX x2**



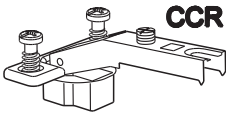
**BWU x2**



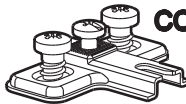
**EP x3**



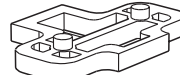
**CF x1**



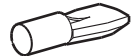
**CCR x4**



**CCS x 4**



**ANN x4**



**BWD x8**



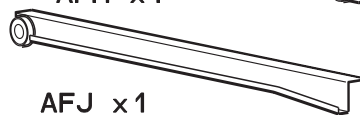
**AFG x1**



**AFH x1**

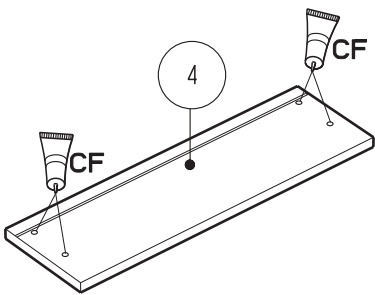
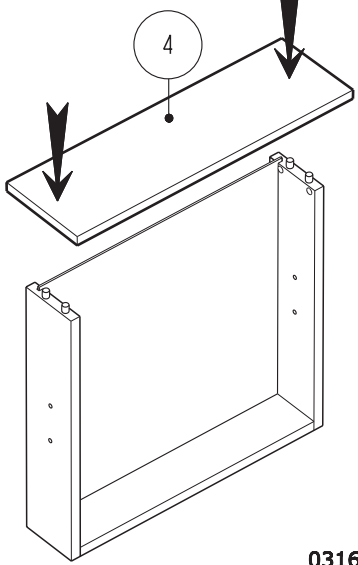
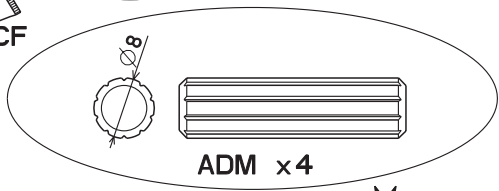
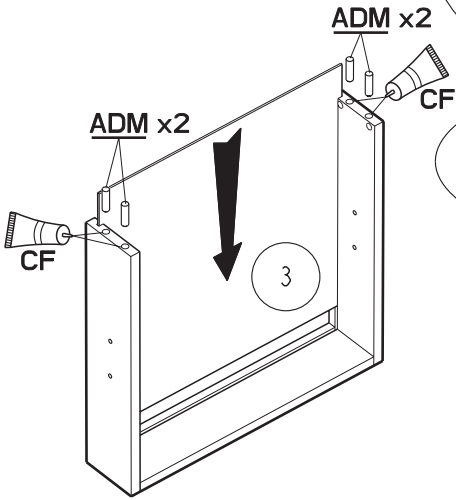
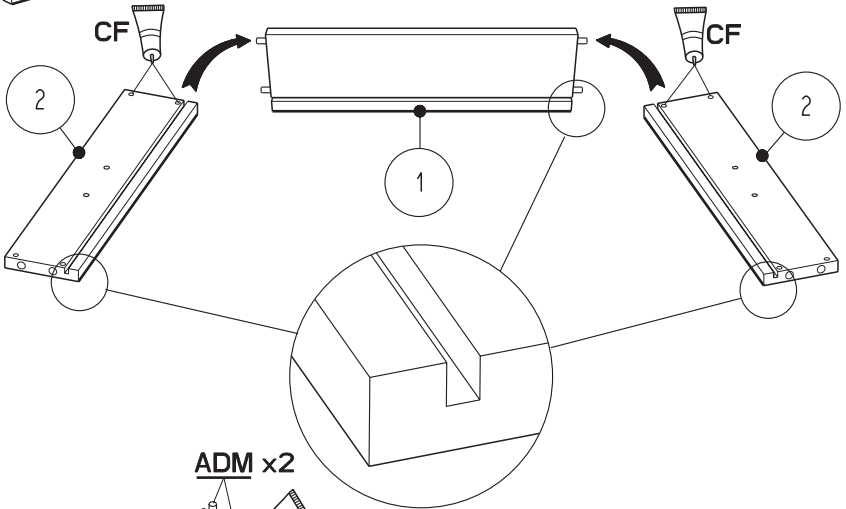
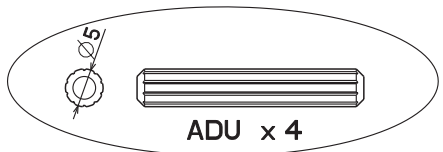
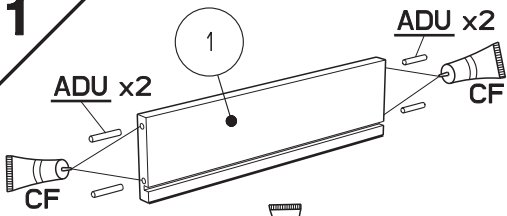


**AFi x1**

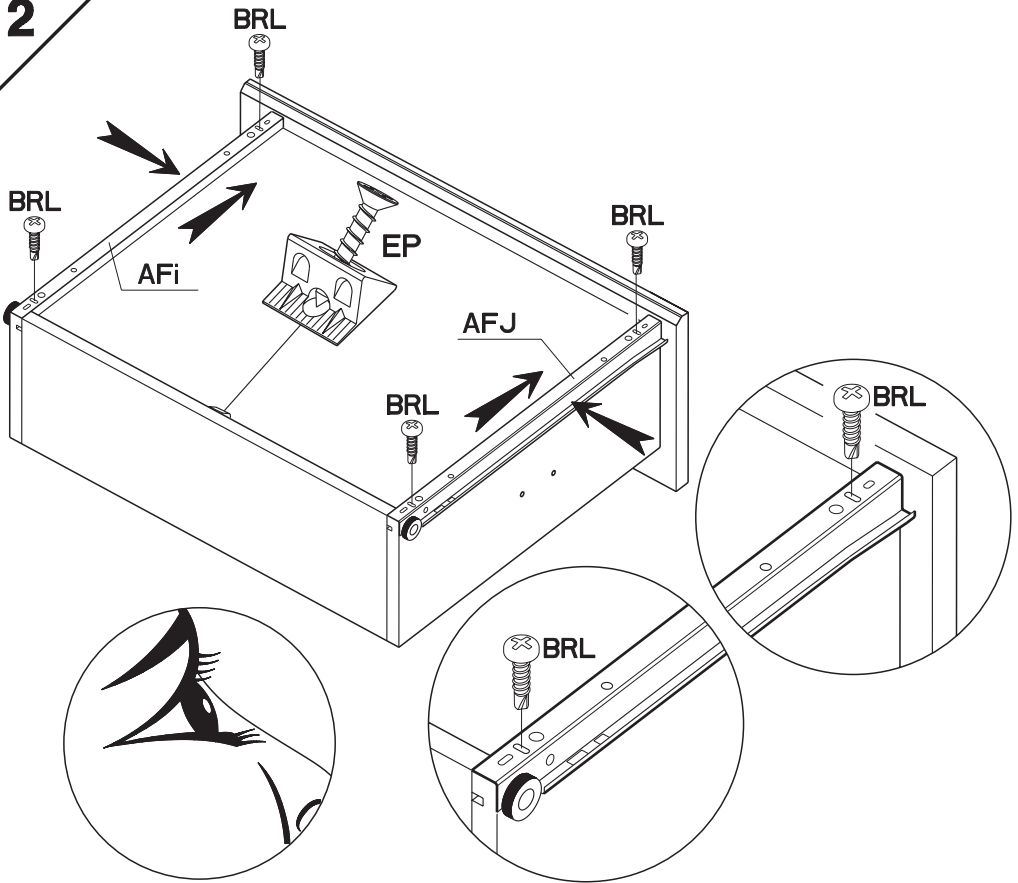


**AFJ x1**

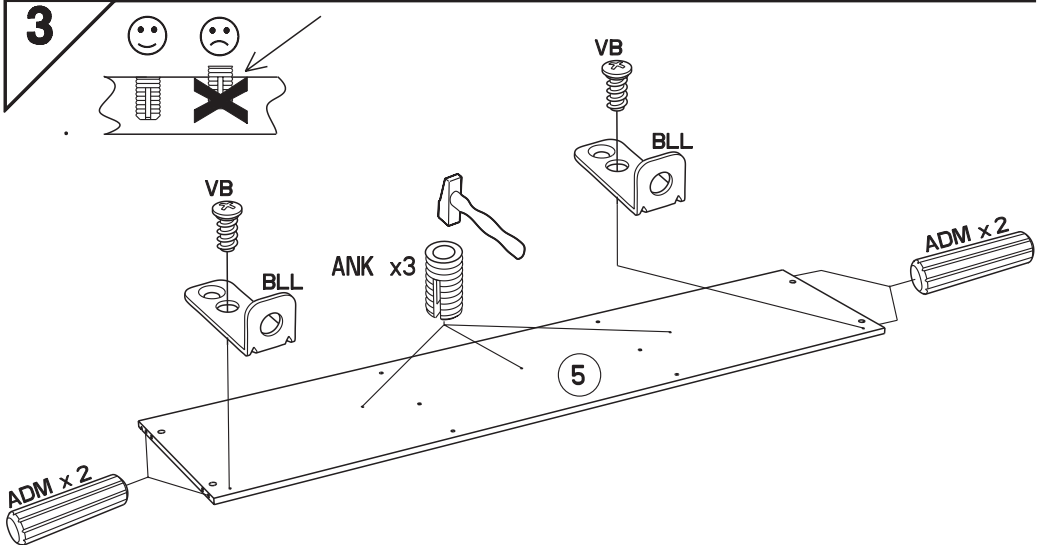
**1**



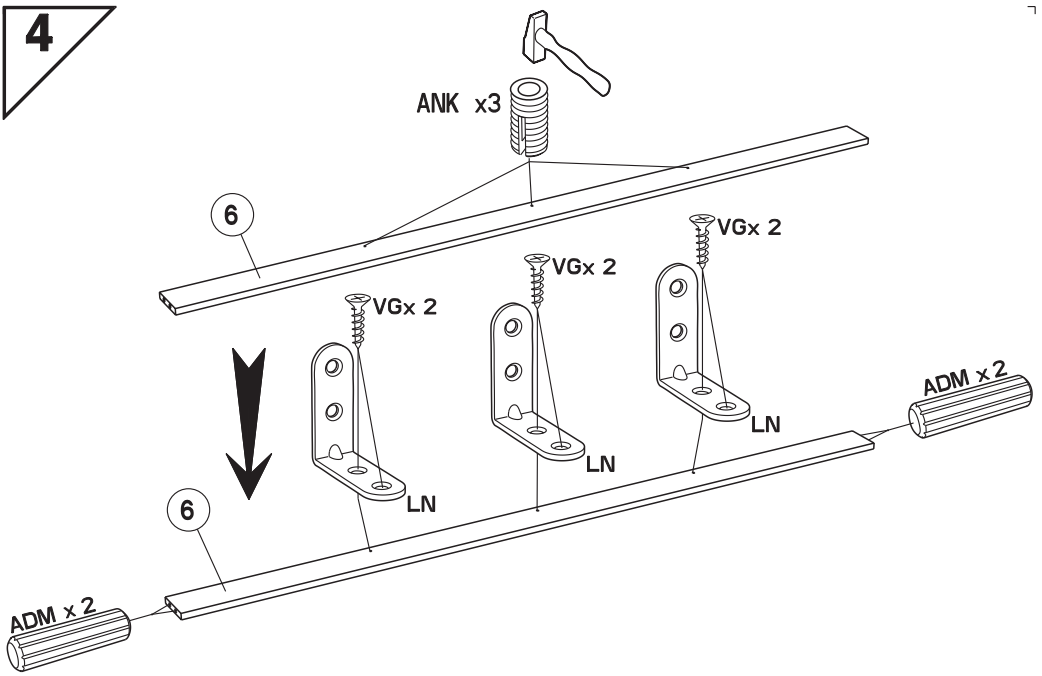
2



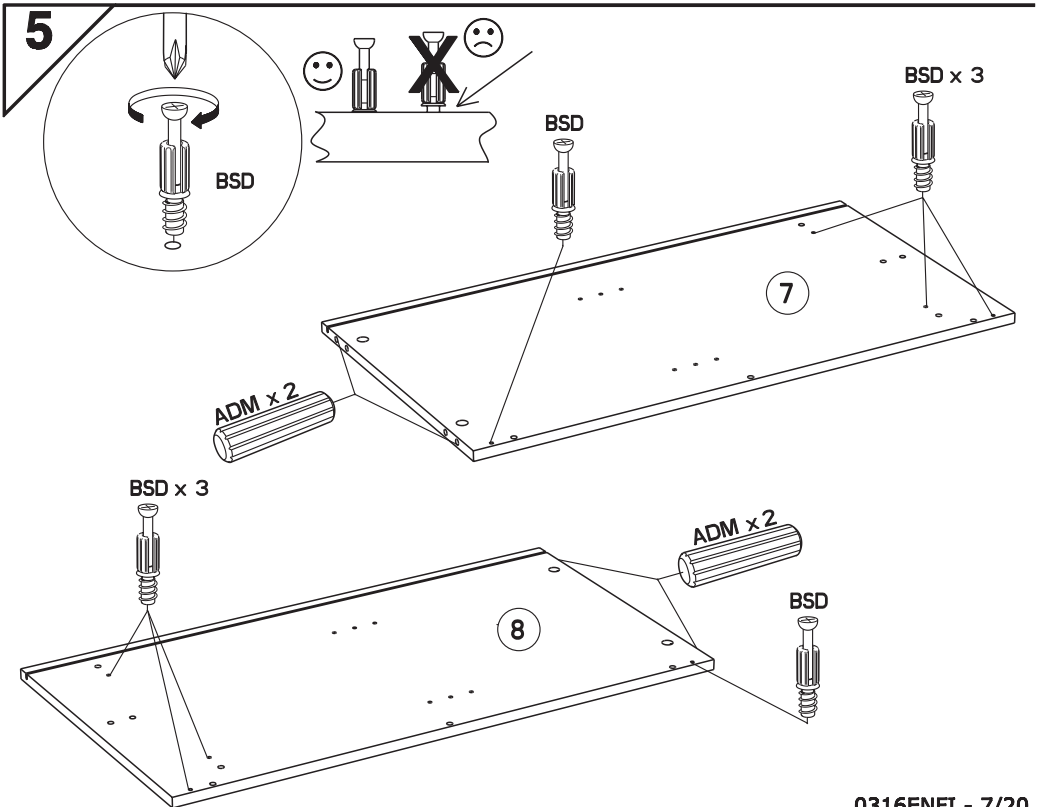
3

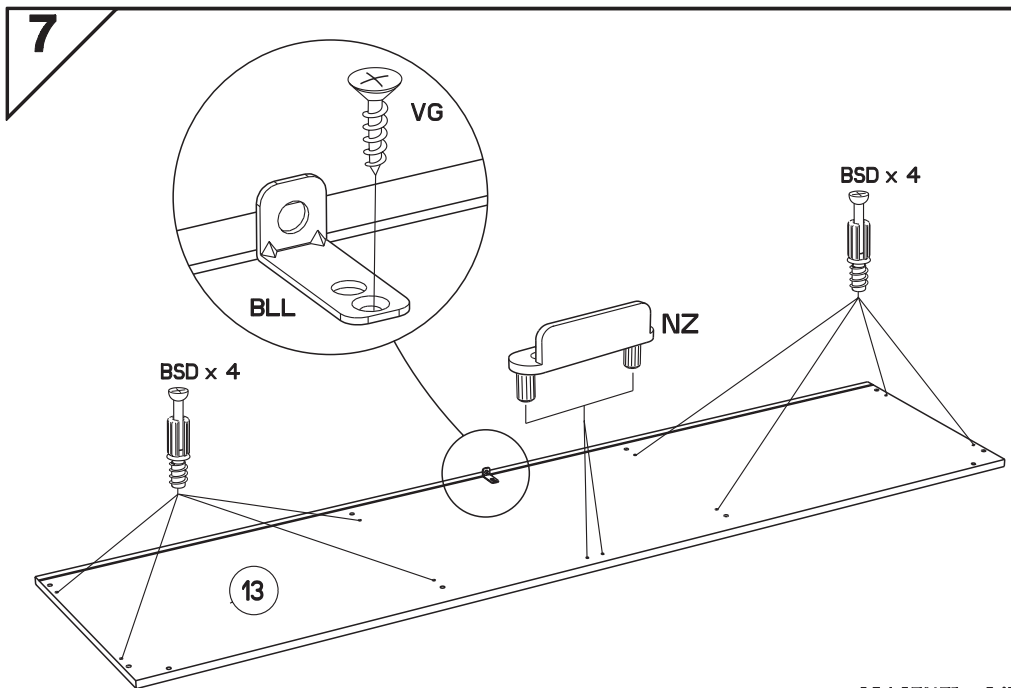
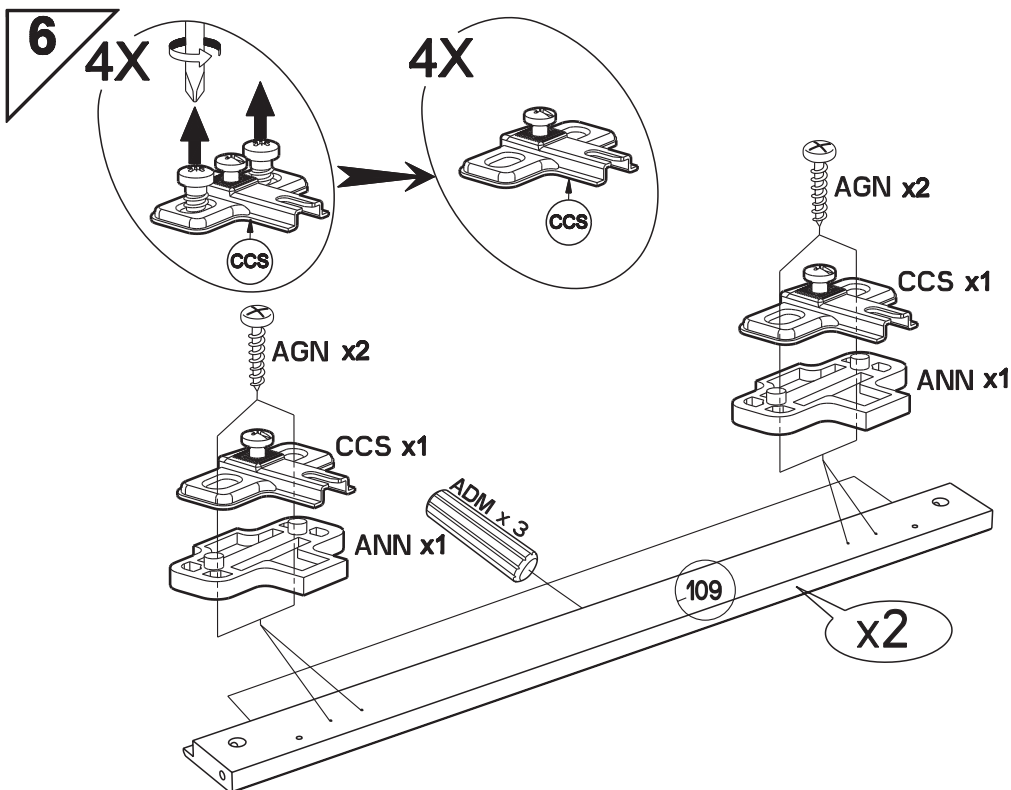


4



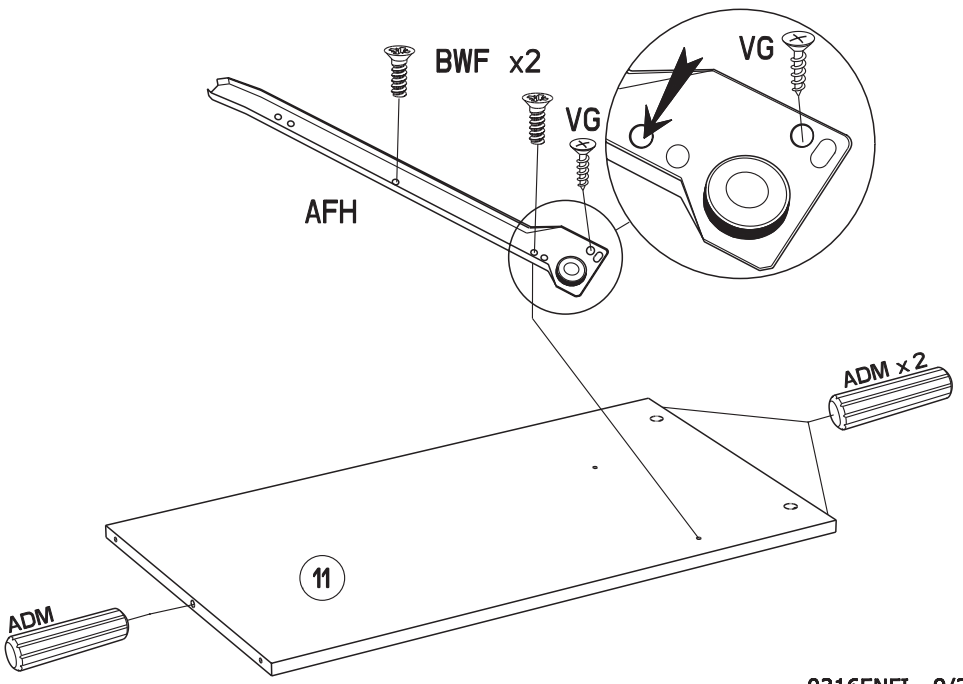
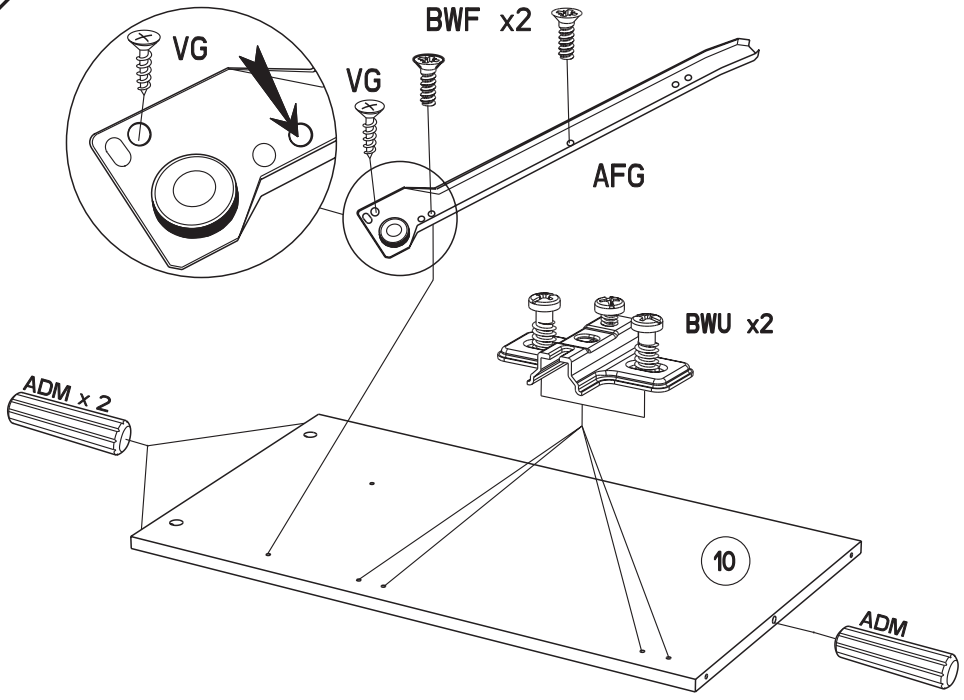
5



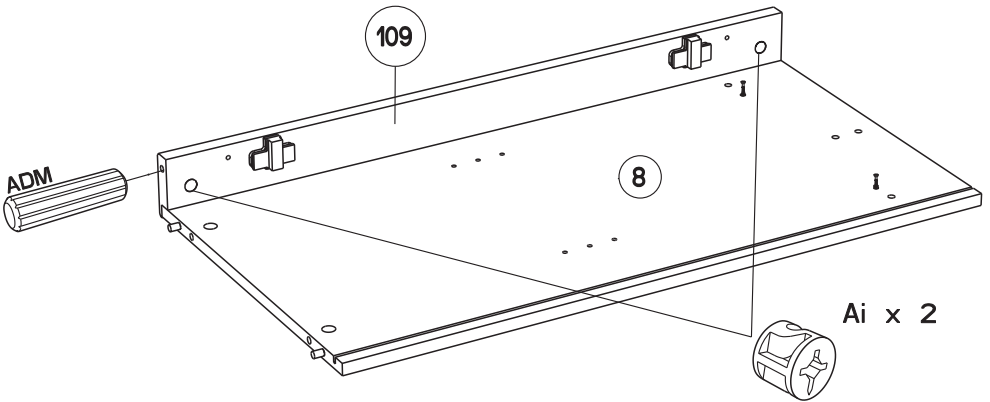
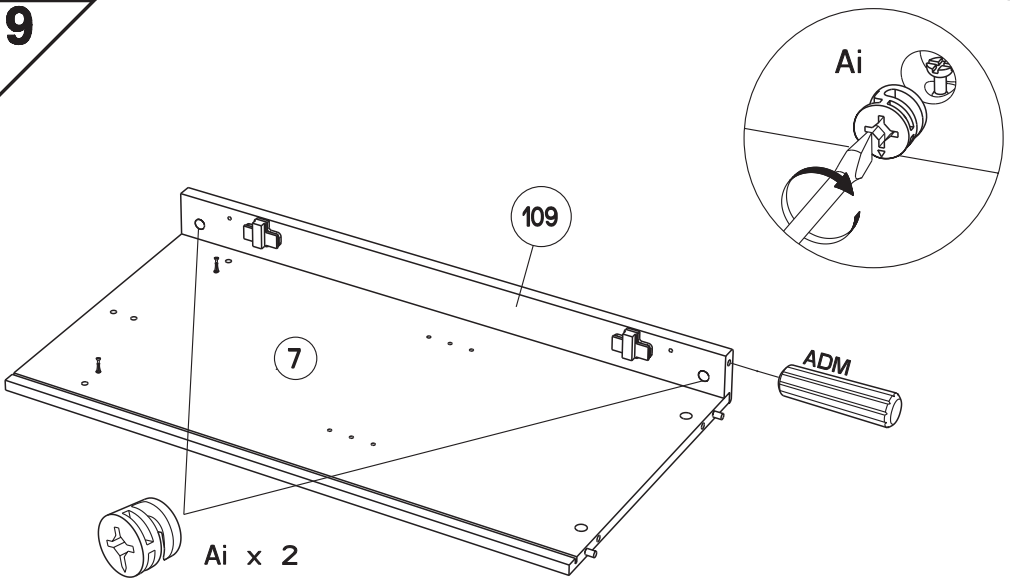




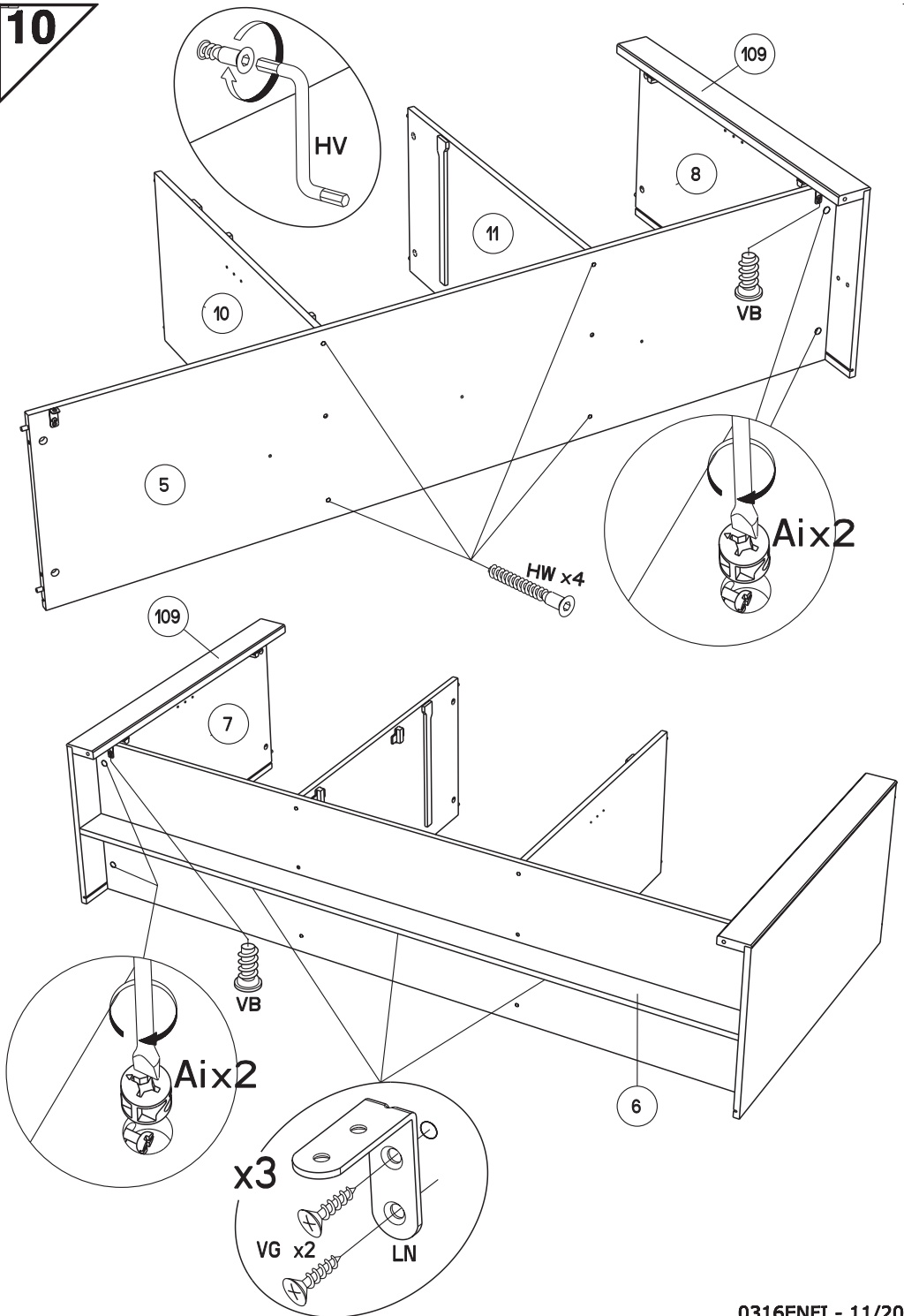
**8**



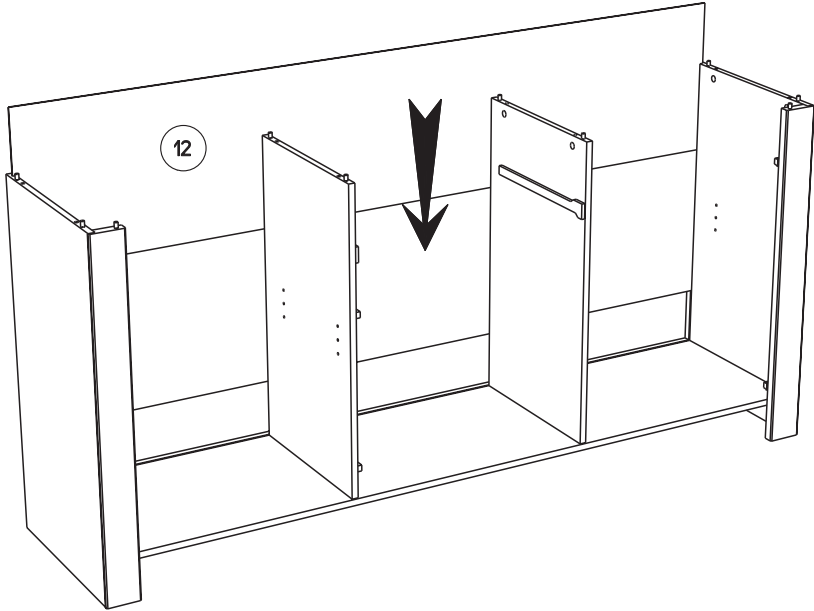
9



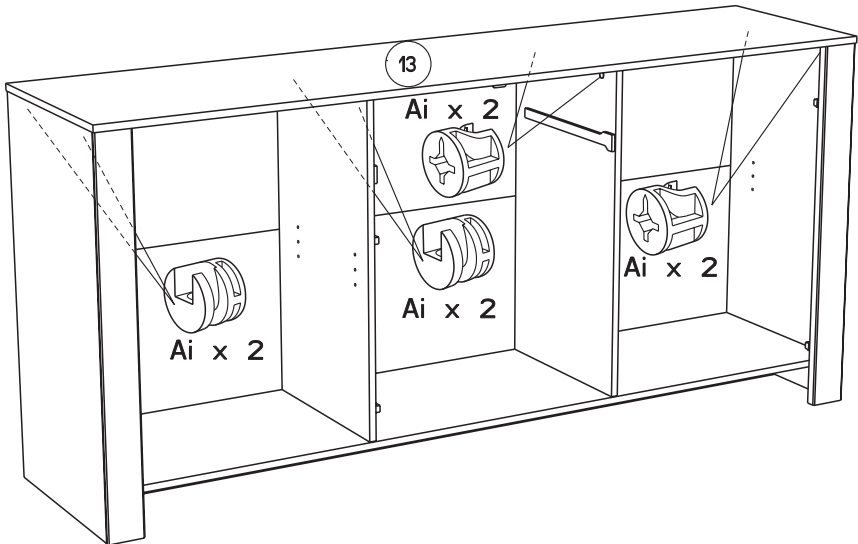
10



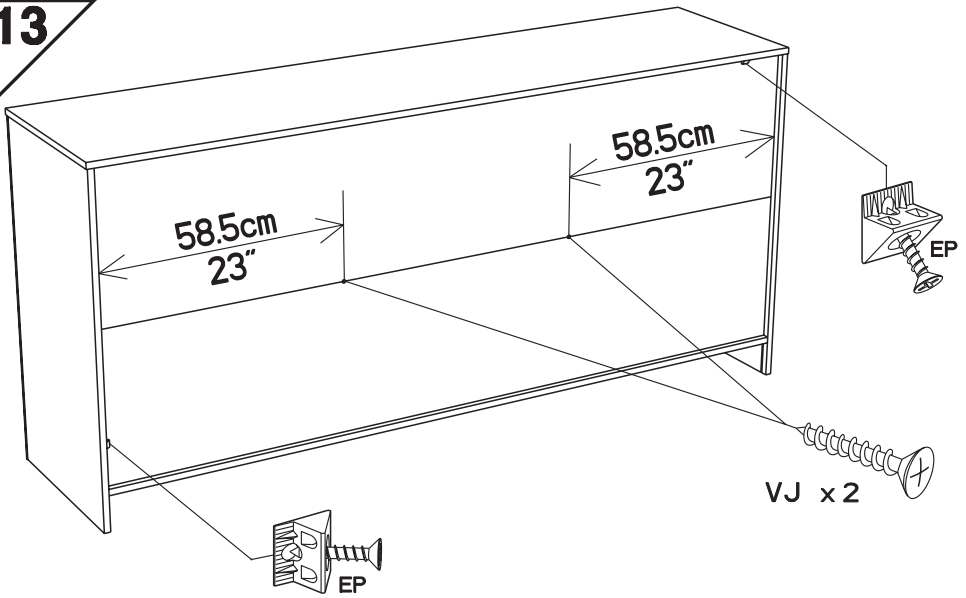
11



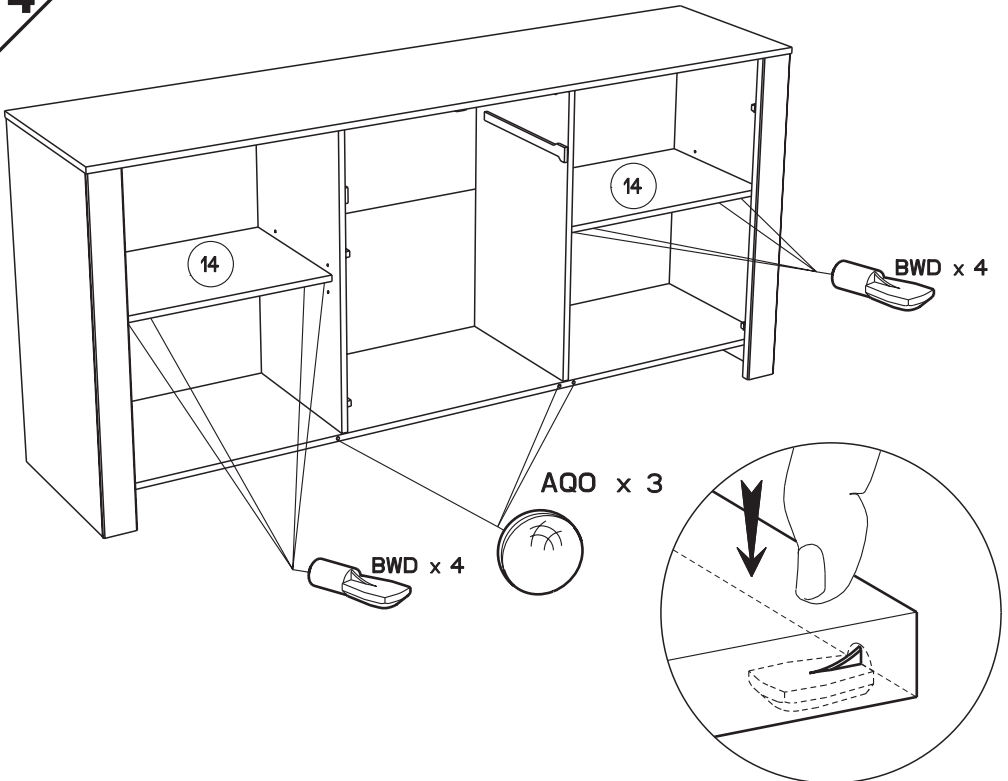
12

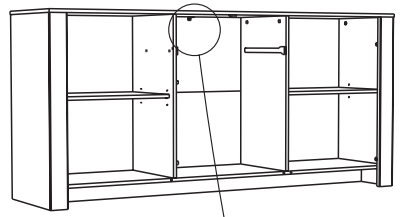


13

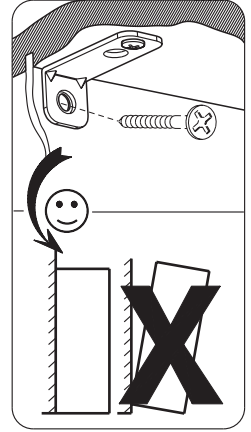


14





- FR** Pour votre sécurité : Fixation du meuble au mur  
Attention, la fixation doit être réalisée par une personne compétente car cela nécessite des chevilles adaptées à la nature de votre mur.
- EN** For your safety: the unit should be secured to the wall.  
NB this should be carried out by a competent person as you must use the right rawlplug for your type of wall.
- DE** Zu Ihrer Sicherheit: Befestigen Sie das Hochbett an der Wand.  
Achtung: Diese Befestigung ist durch eine fachlich kompetente Person vorzunehmen. Hierfür sind für die Bauweise Ihrer Wand geeignete Dübel einzusetzen.
- ES** Por su seguridad: Fijar el mueble a la pared.  
Advertencia: la fijación la ha de llevar a cabo por personal adecuado, ya que requiere el uso de tacos que se adapten al tipo de pared.
- PT** Para sua segurança: fixação do móvel ao muro  
Atenção: a fixação deverá ser efetuada por pessoa habilitada, visto que são necessárias cavilhas adaptadas ao tipo de parede.
- IT** Avvertenza di sicurezza: il fissaggio del mobile a parete deve essere realizzato da una persona competente, in quanto l'operazione richiede l'impiego di tasselli adatti alla natura del muro.
- NL** Voor uw veiligheid: bevestiging van het meubel aan de muur.  
Opgelet de bevestiging moet worden uitgevoerd door een bekwam persoon daar dit voor uw type muur geschikte pluggen vereist.
- CZ** Z bezpečnostních důvodů: upevněte nábytek do zdi  
Pozor, upevnění je třeba svěřit kompetentní osobě, neboť vyžaduje hmoždinky vhodné pro vaši zeď.
- HU** Az Ön biztonsága érdekében : a bűtor falra rögzítése  
Figyelmeztetés : a rögzítés csak megfelelő szakképesítéssel rendelkező személy által végezhető el, mert a rögzítéshez a falnak megfelelő csavarokra van szükség.
- PL** Dla bezpieczeństwa: mocowanie mebla do ściany  
Uwaga, mocowanie musi zostać wykonane przez osobę kompetentną, ponieważ wymaga to zastosowania kołków dostosowanych do rodzaju ściany.
- RO** Pentru securitatea dumneavoastră: fixarea mobilierului de perete  
Atenție, fixarea trebuie să fie realizată de o persoană calificată, deoarece sunt necesare dispozitive de fixare adaptate caracteristicilor peretelui dumneavoastră
- RU** Для вашей безопасности: Крепление мебели к стене  
Внимание! Крепление должно производиться опытным специалистом, т.к. для такой установки потребуются штифты, соответствующие типу вашей стены.
- SK** Z bezpečnostných dôvodov: nábytok upevnite k stene.  
Dbajte na to, aby upevnenie vykonala kompetentná osoba, pretože pri upevňovaní sa vyžadujú kolíky vhodné do materiálu, z ktorého je stena vyrobená.
- TR** Güvenliğiniz için: Mobilyanın duvara sabitlenmesi  
Dikkat, sabitleme işlemi uzman biri tarafından yapılmalıdır çünkü bu işlem için duvarınızın malzemesine uygun dübellerin kullanılması gerekmektedir
- GR** Για την ασφάλειά σας : στερέωση των επίπλων στον τοίχο.  
Προσοχή, η στερέωση πρέπει να γίνεται από ικανό άτομο, καθώς απαιτούνται σφίγγες προσαρμοσμένες στη φύση του τοίχου σας.

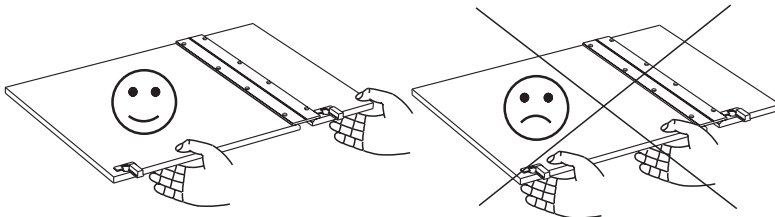
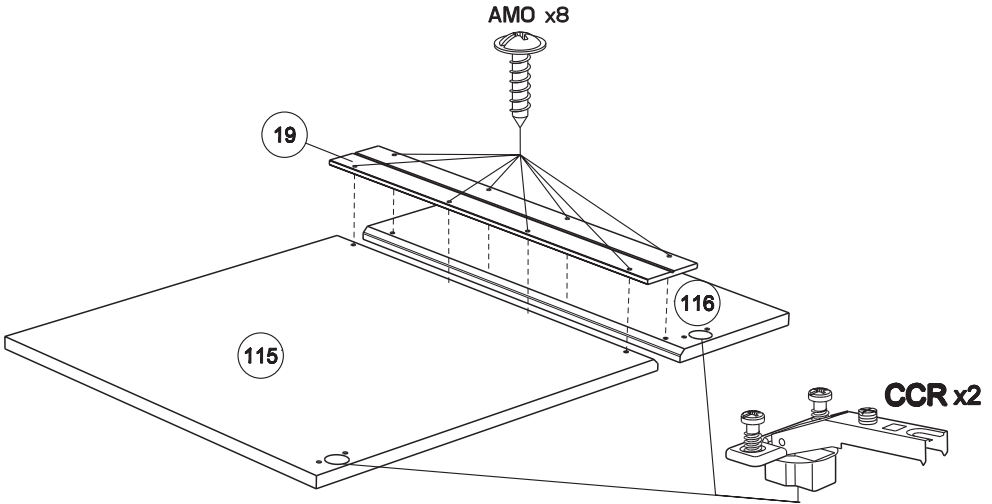
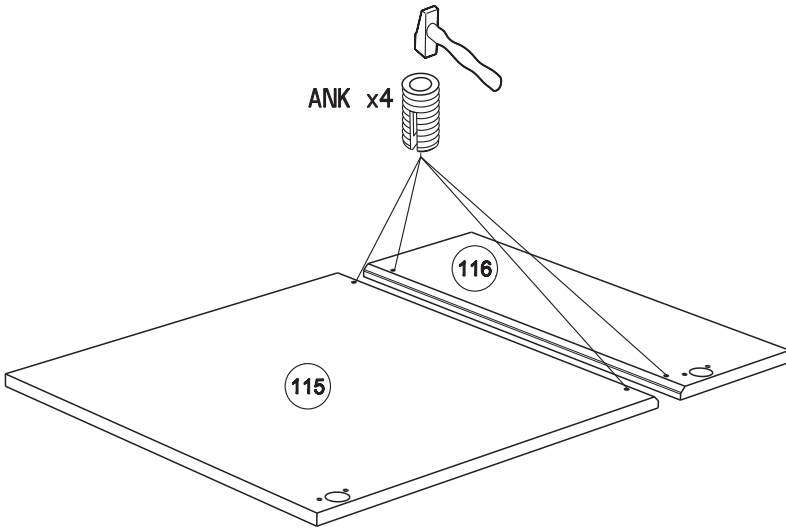


### اللغة العربية

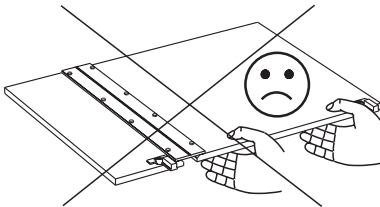
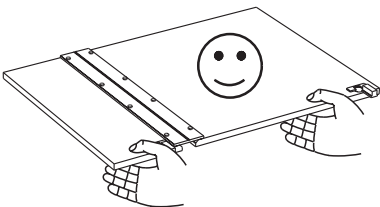
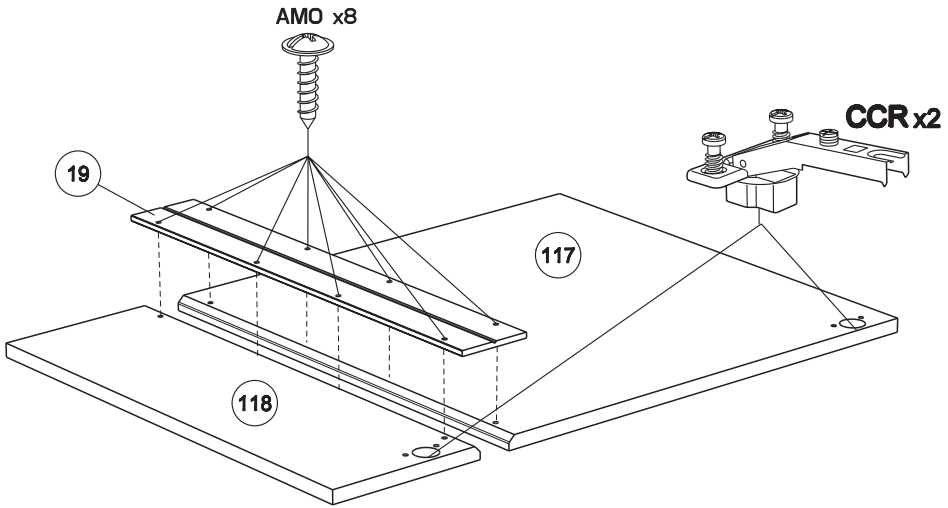
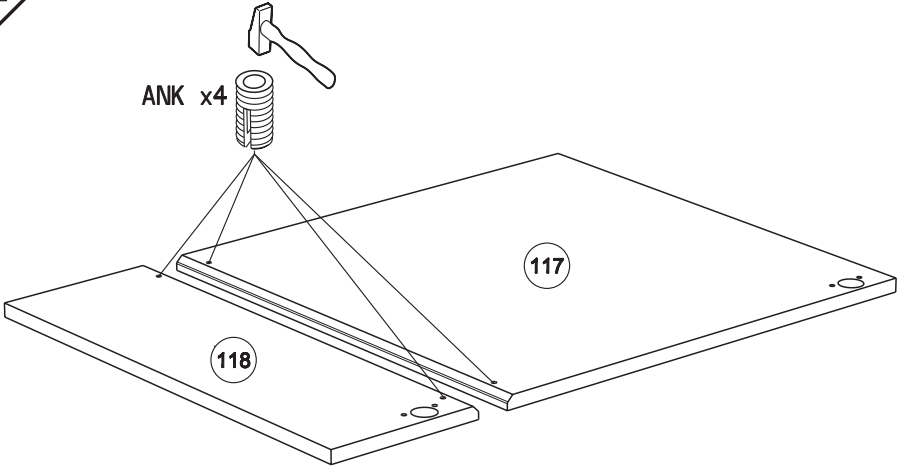
لسلامتكم الشخصية: تثبيت قطعة الأثاث على الحائط

تحذير، يجب أن يقوم شخص متخصص بعملية التثبيت على الحائط إذ أنها تتطلب اسفيناً معيناً يتوافق مع طبيعة الحائط نفسه.

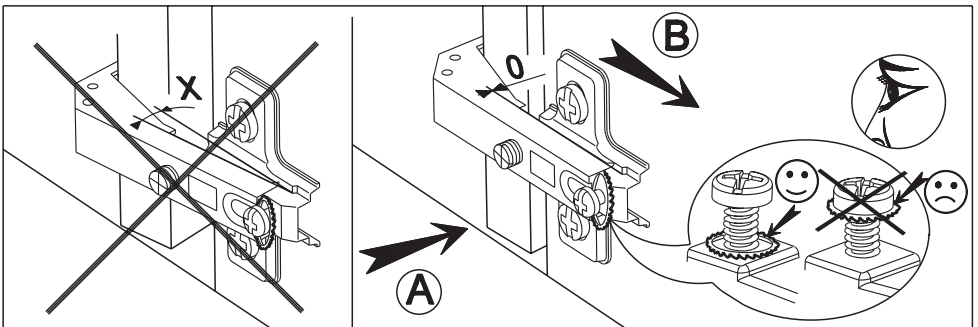
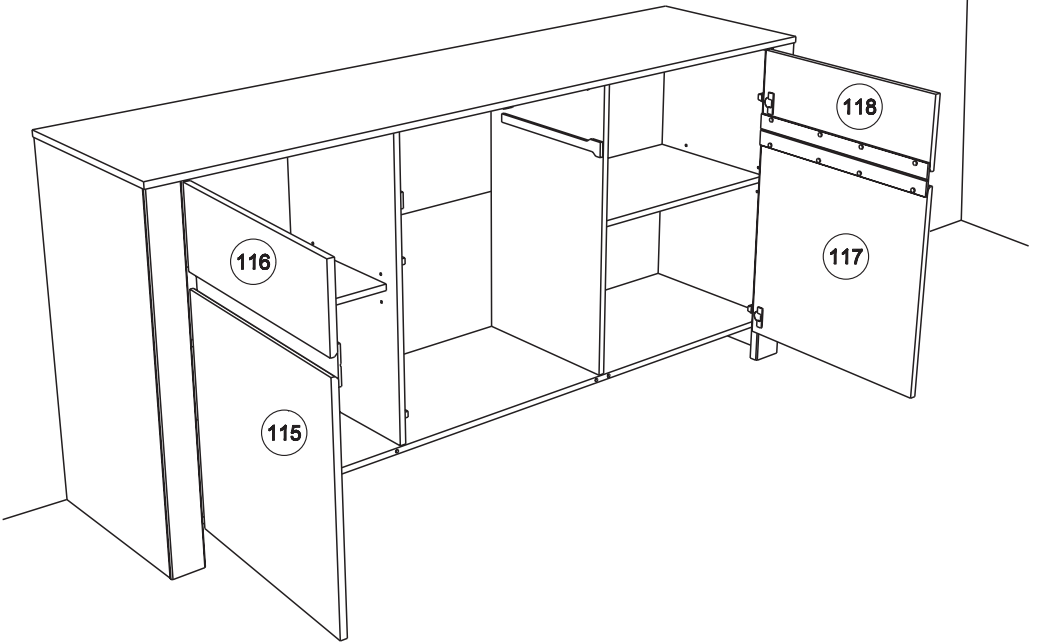
16



17

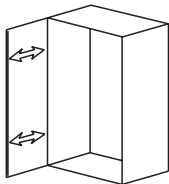




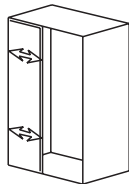


F REGLAGE    GB ADJUSTING    E AJUSTER    I AGGIUSTAMENTO  
 D ANPASSUNG    P REGULACAO    NL AFSTELLING

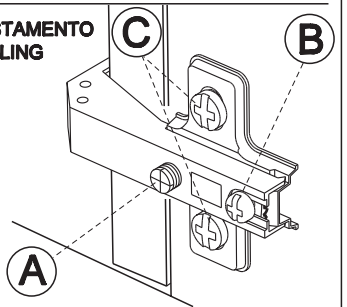
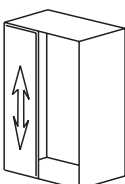
A

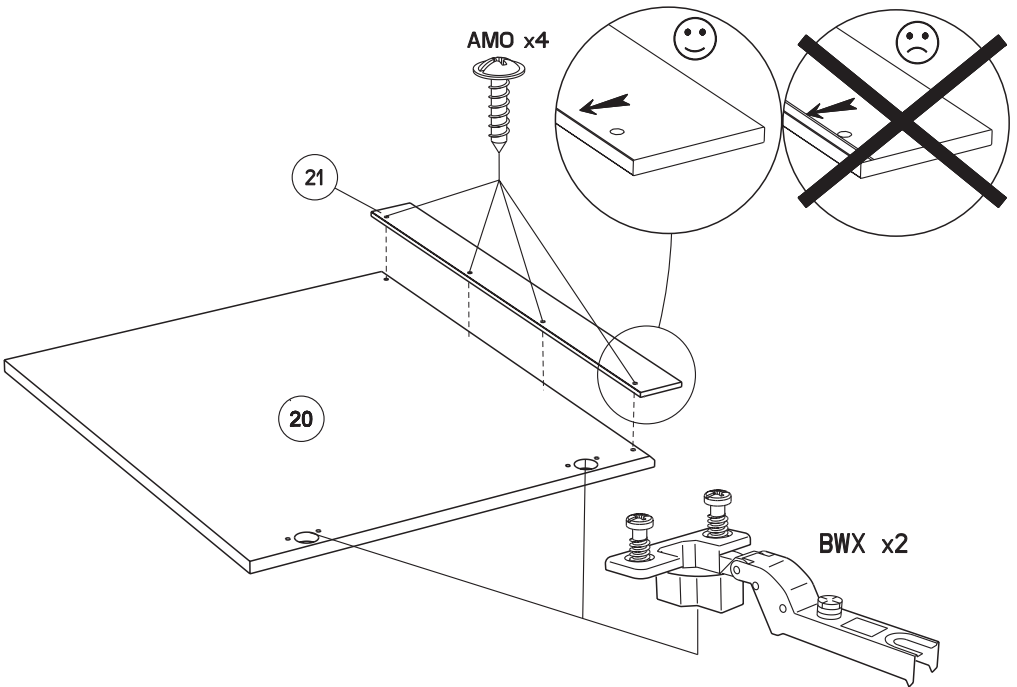
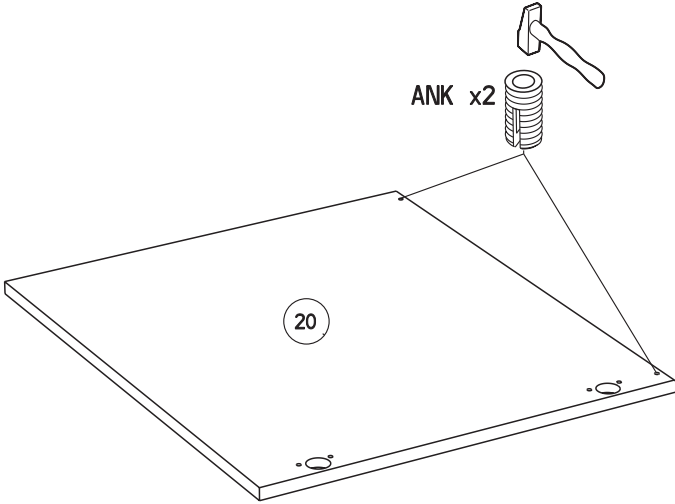


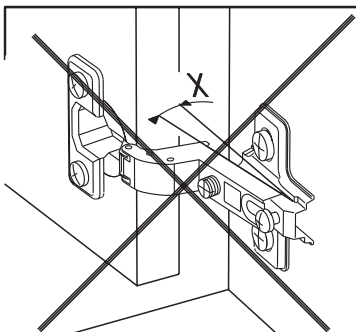
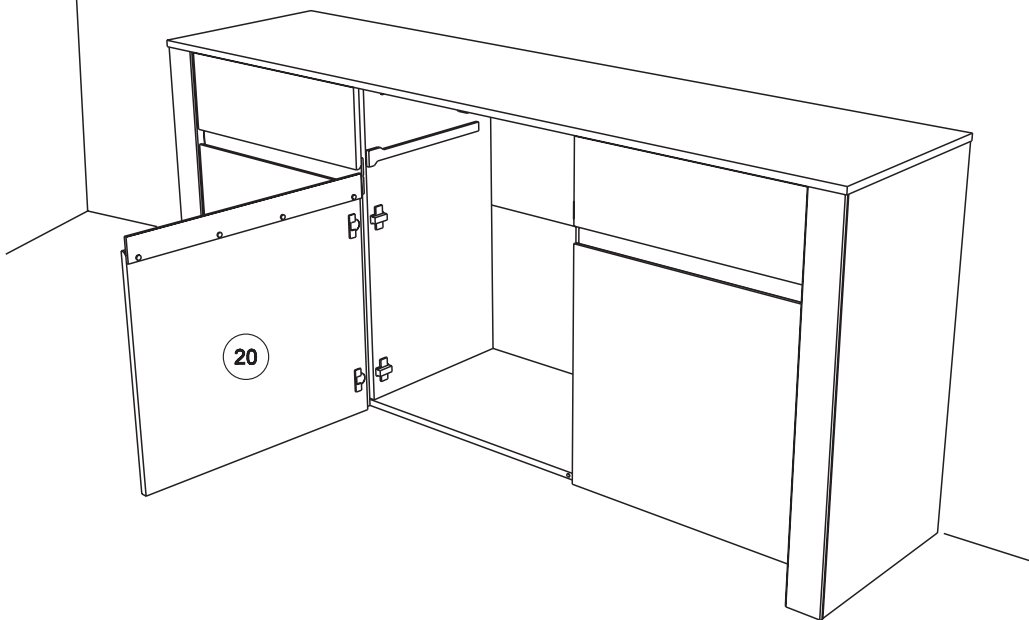
B



C

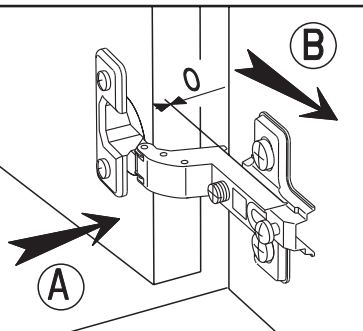




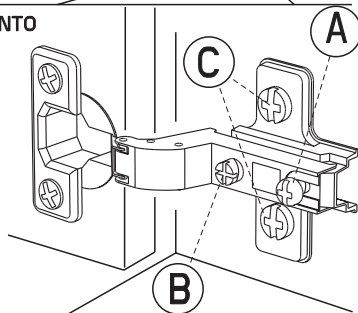
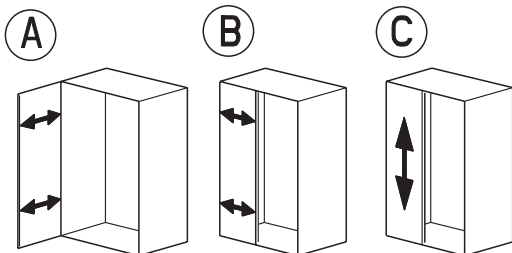


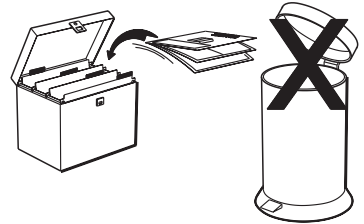
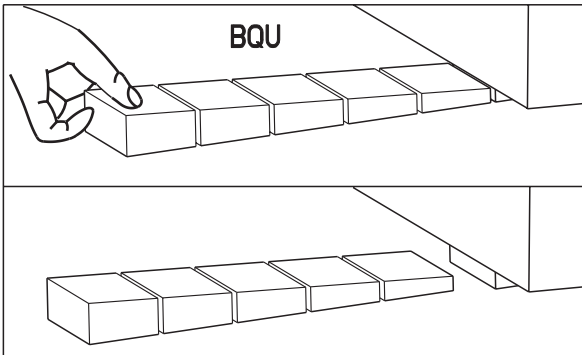
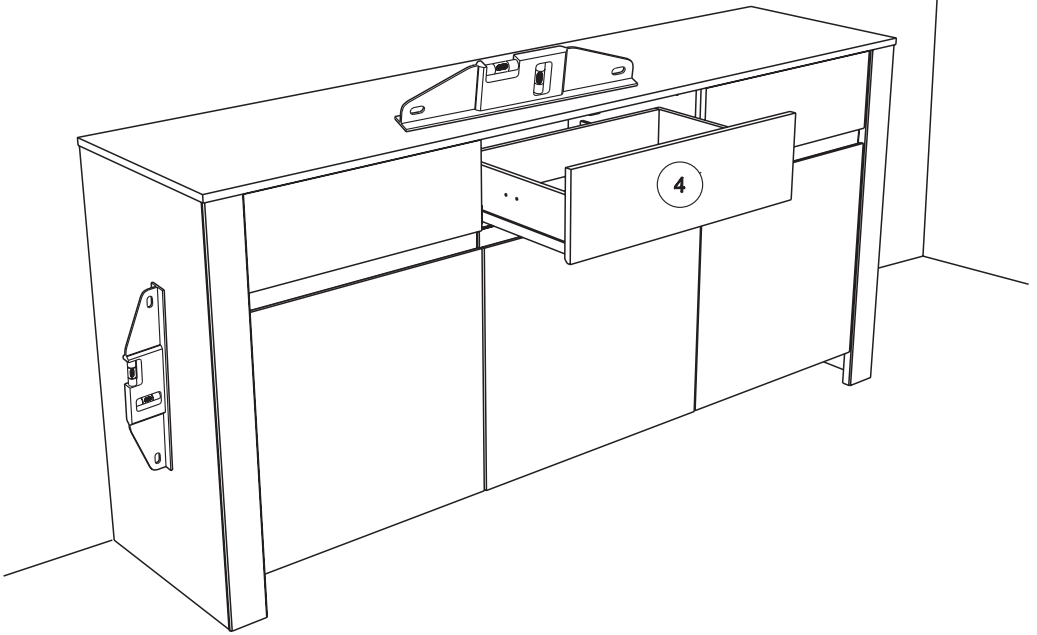
**MONTAGE**

- GB** LEAFLET
- D** AUFBAUANLEITUNG
- E** MONTAJE
- P** MONTAGEM
- I** MONTAGGIO
- NL** MONTAGE



- REGLAGE**   **GB** ADJUSTING   **E** AJUSTER   **I** AGGIUSTAMENTO  
**D** ANPASSUNG   **P** REGULACAO   **NL** AFSTELLING





Faites un geste pour l'environnement en triant vos déchets d'emballage  
 Make a gesture for the environment by sorting out your waste of packaging  
 Machen Sie eine Bewegung für die Umwelt, ihre Verpackungsabfälle sortierend  
 Haga un gesto para el medio ambiente escogiendo sus residuos de embalaje